



SEE SIMPLY. ACT DECISIVELY.

INTRODUCING ULTREON™ 1.0 SOFTWARE

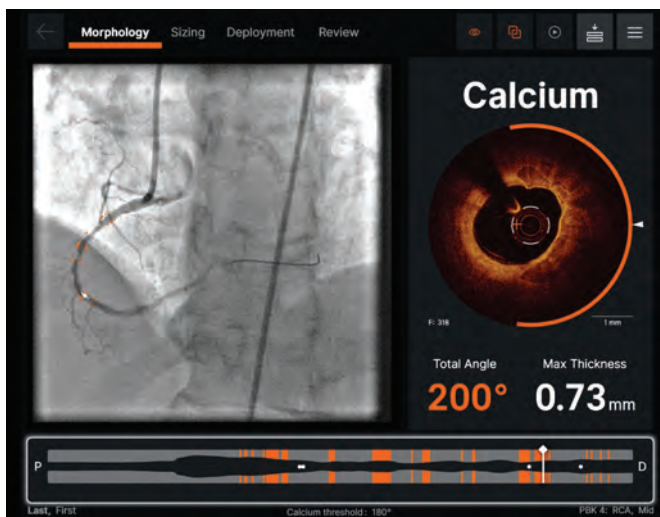
Streamlined and intuitive, **Ultreon™ 1.0 Software** gives better insights to optimize patient outcomes through aided decision making¹⁻³

EXPERIENCE THE POWER OF AUTOMATION

For auto-detection of calcium and vessel diameter to aid decision-making on vessel preparation and stent planning, decisions that may impact final stent expansion.⁴

SEE SIMPLY:

Easy to use with the new intuitive interface enabled by artificial intelligence (AI)^{1,5}



1a. Morphology screen displaying angle and max thickness of calcification with angio co-registered view



1b. Sizing screen displaying External Elastic Lamina (EEL) and Lumen diameter for proximal, current and distal frames

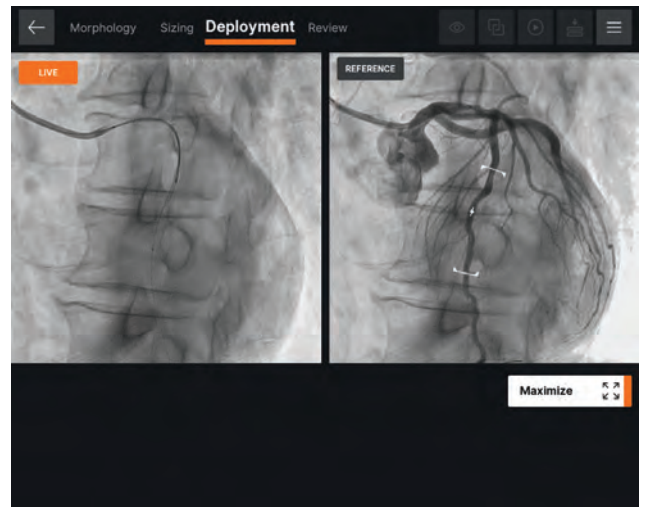
Information contained herein for **DISTRIBUTION** outside the U.S. only. Check the regulatory status of the device in areas where CE marking is not the regulation in force.

ACT DECISIVELY:

Streamlined workflow that facilitates accurate decision-making¹, reducing ambiguities.⁶ Enables rapid cath lab learning curve for both physiology and imaging tools.



2a. Physiology Review screen displaying pressure gradient and RFR value



2b. Deployment screen showing side-by-side view of live Angio feed and co-registered frame



2c. Post-OCT Review screen displaying augmented stent struts along with apposition (yellow) and expansion (orange) indicators

1. Ultreon™ 1.0 Software Claims Memo. 2. Zhang J, et al. Intravascular ultrasound versus angiography-guided drug-eluting stent implantation: the ULTIMATE trial. *J Am Coll Cardiol.* 2018;72(24):3126-3137. 3. Hong M et al., IVUS-XPL 5 Year Outcomes, TCT 2019. 4. Bezerra, Hiram et. al. Analysis of Decision-making Process During OCT-guided PCI - Insights from the LightLab Initiative. TCT AP 2020 Abstract (ABS20200709_0001). 5. Ultreon™ 1.0 Software IFU. 6. Jones et al. *JACC Cardiovascular Interventions*, 2018, vol 11 (14). "Angiography Alone Versus Angiography Plus Optical Coherence Tomography to Guide Percutaneous Coronary Intervention – Outcomes From the Pan-London PCI Cohort".

CAUTION: This product is intended for use by or under the direction of a physician. Prior to use, reference the Instructions for Use, inside the product carton (when available) or at vascular.eifu.abbott or at medical.abbott/manuals for more detailed information on Indications, Contraindications, Warnings, Precautions and Adverse Events.

Information contained herein for DISTRIBUTION outside the U.S. only. Check the regulatory status of the device in areas where CE marking is not the regulation in force.

Illustrations are artist’s representations only and should not be considered as engineering drawings or photographs. Photos on file at Abbott.

Abbott International BVBA
Park Lane, Culliganlaan 2B, 1831 Diegem, Belgium, Tel: 32.2.714.14.11

™ Indicates a trademark of the Abbott Group of Companies.

www.cardiovascular.abbott
©2021 Abbott. All rights reserved. MAT-2102545 v1.0

